

Tru-Test WinWeigh

Animal Performance Program

User Manual

Trademarks

Windows is a trademark of Microsoft Corporation.

Copyright *TRU-TEST* Limited, 1994.

No part of this document may be photocopied or reproduced without the prior written consent of *TRU-TEST* Limited.

The contents of this manual are subject to change without notice.

While every effort has been made to ensure the accuracy of the information in this manual, Tru-Test Ltd. accept no responsibility for any errors or their consequences.

Contents

Introduction	1
About WinWeigh	1
What You Need to Run WinWeigh	1
What You Need to Know.....	2
Installation	3
Default Directory Structure	4
Basic Operation and Terminology	5
Running WinWeigh	5
The Weight Gain Sheet.....	6
Getting Help.....	8
Quitting WinWeigh.....	8
Indicator ↔ Computer Communications.....	8
WinWeigh Procedures	10
Typical Sequence of Operations	10
Open an Existing Weight Gain Sheet	11
Start a New Weight Gain Sheet	11
Save a Weight Gain Sheet.....	12
Download a Session from the Indicator.....	12
Upload a Session to the Indicator	13
Import a Session from Computer Disk	14
Export a Session to Computer Disk	15
Edit Data on the Weight Gain Sheet.....	16
Manually Add a Session	16

Delete a Session	16
Add an Animal	17
Delete an Animal	17
Edit Sheet Options	17
Sort the Weight Gain Sheet	22
Session Information Window	24
Animal History Database.....	25
Printing	27
Printer Setup	27
Print Preview.....	27
Print Reports	27
Reference Section	29
The Tool Bar	29
The Menu System	29
Glossary of Terms	34
Index	37

Introduction

This manual tells you how to operate the *TRU-TEST* WinWeigh program.

About WinWeigh

WinWeigh is a Windows based animal performance program. It automatically loads data from *TRU-TEST* weighing systems and provides facilities to manipulate and present the data in many useful ways.

You can:

- Rank animal performance with percentage weight gain.
- Sort animals by many different criteria including total weight gain, daily weight gain and condition code.
- Predict future weights.
- Predict number of days to reach a weight.
- Maintain a database of animal details.

WinWeigh operates on an IBM PC compatible computer and connects to a *TRU-TEST* weighing system indicator. Communications are automatically handled by the program.

What You Need to Run WinWeigh

Computer

You need an IBM PC compatible computer that is capable of running Microsoft Windows version 3.1 or later.

The computer must have a floppy disk drive (either 3.5 or 5.25 inch disks).

Indicator

WinWeigh can operate with the following indicator models:

702

703

AG500-02 version 3

AG500-03 version 3

WinWeigh

WinWeigh is supplied on a floppy disk complete with an installation program.

The cable to connect the indicator to the computer is also supplied.

What You Need to Know

Windows

Before running WinWeigh you should be familiar with standard Windows procedures such as how to start a program and how to load and save files. For information on this, refer to the Windows manual.

Indicator

You need to know how to operate the *TRU-TEST* indicator. For information on this, refer to the indicator's user manual.

Printer

For printing reports, you need to know how to operate your printer. WinWeigh uses the standard Windows printer drivers and setup routines.

Installation

WinWeigh comes with a setup program that automatically creates the necessary directories on your hard disk and installs the software.

Once installed, WinWeigh appears in a program group similar to your other Windows programs.

To install WinWeigh

1. Start your computer and Windows in the normal way.
2. Insert the WinWeigh disk in drive A: .
3. In "Program Manager", select **File** | **R**un and, in the command line box, type
`A:\SETUP`
4. Select **OK**.
5. The setup program loads and displays instructions on screen.
6. Follow the instructions to install and register WinWeigh.
7. When Setup has finished, remove the WinWeigh disk and keep it in a safe place.

This completes the installation of WinWeigh.

To run WinWeigh, see *Basic Operation* below.

Default Directory Structure

The following list shows what files are normally saved in the default directories created by the WinWeigh setup program.

\WINWEIGH\PROGRAM	WinWeigh programs.
\WINWEIGH\INDICATR	Weighing session data.
\WINWEIGH\BEEF	Weight gain sheets for beef.
\WINWEIGH\DEER	Weight gain sheets for deer.
\WINWEIGH\SHEEP	Weight gain sheets for sheep.
\WINWEIGH\PIG	Weight gain sheets for pig.
\WINWEIGH\DAIRY	Weight gain sheets for dairy.

Basic Operation and Terminology

This section describes how to start WinWeigh and explains the terminology. For instructions on particular procedures, see *WinWeigh Procedures* on page 10.

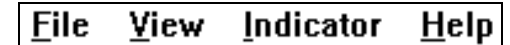
Running WinWeigh

Before running WinWeigh you may need to connect the indicator to the computer. Instructions for this are given on page 8.

To run WinWeigh, start your computer and Windows in the normal manner, then double click on the **WinWeigh** icon.

The logo screen appears for a few seconds and then the WinWeigh menu and tool bar are displayed.

Menu



Tool bar



The menu and toolbar functions are described in the reference section on page 29.

WinWeigh is a spreadsheet program. The working area on screen is known as the *Weight Gain Sheet* and uses common spreadsheet layout.

To get started, you need to create a new weight gain sheet or load an existing one (see page 10).

The Weight Gain Sheet

File View Sheet Indicator Window Help									
Units: kg Beef Tag #	01/07/94	No 3	# 2	02/08/94		# 3	Total Weight Gain	Dress Weight 52.0 %	Days until 500kg
	Live Weight	Weight Gain	Cond Code	Live Weight	Weight Gain	Cond Code			
17	115.0	33.0		150.0	35.0		68.0	78.0	314.0
16	90.0	33.0		130.0	40.0		73.0	67.6	309.2
18	85.0	34.0		115.0	30.0		64.0	59.8	367.0
19	70.0	18.0		110.0	40.0		58.0	57.2	410.2
15	88.0	34.0		105.0	17.0		51.0	54.6	472.5
20	89.0	21.0		120.0	31.0		52.0	62.4	445.8
14	110.0	22.0		150.0	40.0		62.0	78.0	344.4
Average	92.4	27.9		125.7	33.3		61.1	65.4	380.4
Total	647.0	195.0		880.0	233.0		428.0	457.6	
Count	7	7		7	7		7	7	0.0

Rows

Each row represents one animal. The animal's tag ID is shown in the left hand column.

You can have a maximum of 5000 rows (animals) on one weight gain sheet.

The bottom three rows always contain the *Average* and *Total* weights and *Count* (number of animals in each session).

Columns

The columns give the data recorded in the weighing sessions, each session using three columns for *Live Weight*, *Weight Gain* and *Condition Code*. The sessions are separated by vertical bold lines.

You can have a maximum of 50 sessions on one weight gain sheet.

The left hand column is reserved for the animal tag ID's.

The last three columns on the right are used for calculated values. The type of values displayed can be selected using the sheet options (see page 17).

Sessions

Weighing sessions are sorted in date order from left to right, so that, if you add the data from a new session, it is automatically inserted in correct chronological order.

Cells

A cell is one item of data in one box on the spreadsheet. You can move from one cell to another by clicking with the mouse or using the arrow keys. The active cell is highlighted.

You can edit the data in the weight or condition code cells by typing over the existing numbers.

If you change any data, the calculated figures are automatically updated.

Windows

You can have more than one weight gain sheet open at a time. Each weight gain sheet is displayed in a *window*. Use standard Windows methods to move from one window to another.

Menu Bar

The menu bar is always available at the top of the screen.

File View Sheet Indicator Window Help

This gives you access to the functions of WinWeigh. The functions are described later in this manual. A complete reference to all the options is given on page 29.

Tool Bar

The tool bar contains buttons that you can select to give quick access to certain functions.



See page 29 for a description of each button.

Getting Help

WinWeigh has an on-screen help system that can be accessed via the **Help** menu or ? button.

In addition, helpful prompts appear on the status bar at the bottom of the screen.

Quitting WinWeigh

To quit WinWeigh, use the standard Windows methods. ie. select **F**ile | **E**xit or press **Alt-F4**.

Indicator ↔ Computer Communications

WinWeigh handles all communications with the indicator automatically. All you need to do is connect the indicator to the computer with the cable provided and establish communications.

Connecting the Cable

The communications cable must be connected to the socket marked "Printer" on the indicator and the serial port on the computer. Two types of plug are provided to cater for all suitable computers.

In WinWeigh, you must select the computer port (eg. COM1, COM2, etc.) that you have connected the indicator to. Use the **Indicator | Options** menu.

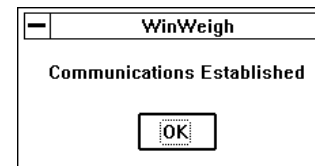
Establishing Communications

If the indicator is switched on and connected to the computer when you start WinWeigh, communications are established immediately.

If the indicator was not on when you started WinWeigh, you can establish communications manually as follows.

Select **Indicator | Reset Indicator**.

WinWeigh establishes communications and, when finished, displays the following message .



The indicator also beeps twice.

WinWeigh Procedures

This is the main section of the manual, it tells you how to carry out the common procedures in WinWeigh.

Use the contents list at the beginning of the manual to find the page number for the required procedure.

A typical sequence of operations is given below.

Typical Sequence of Operations

1. Open an existing or new weight gain sheet. Page 10
2. Download sessions (files) from the indicator. Page 12
3. Select weight gain options. Page 17
4. Select sort options Page 22
5. View and perhaps manually edit the data. Page 16
6. Save the weight gain sheet. Page 12
7. Preview the reports on screen. Page 27
8. Print the reports. Page 27

Note

The time that WinWeigh takes to re-calculate the weight gain sheet when you make changes depends on the processing speed of your computer.

If you have a slow computer, a large weight gain sheet may take several minutes to calculate. **Do not press any keys while the hourglass symbol is displayed in place of the mouse pointer.**

Open an Existing Weight Gain Sheet

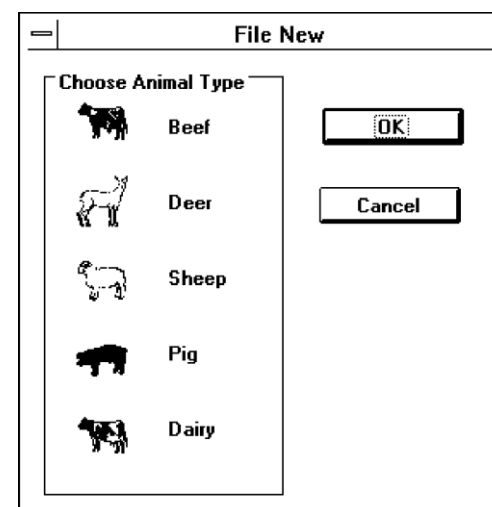
1. Select **F**ile | **O**pen.

2. Select the directory and file using normal Windows methods. The file extension is **.WGS** for weight gain sheets.
3. WinWeigh displays the weight gain sheet on screen with all its previous settings and data.

Note: You can use the standard Windows quick method of loading the last few opened files by selecting **File** and then typing the number of the required file as listed at the bottom of the menu.

Start a New Weight Gain Sheet

1. Select **F**ile | **N**ew.
2. Select the directory (type of animal).



3. WinWeigh opens a new weight gain sheet with no sessions or animals.

You can then add sessions and animal data by one of the following means:

- Download a session file from your *TRU-TEST* indicator. See page 12.
- Import a session file from computer disk. See page 14.
- Manually add a session. See page 16.

Save a Weight Gain Sheet

You can save a weight gain sheet to computer disk. The current data and all the settings of the sheet are saved and can be recalled later (see *Open a Weight Gain Sheet* on page 10).

You can save the sheet in its original directory and file (if any) or with a new file name.

To save the weight gain sheet in its original directory and file, select **F**ile | **S**ave.

To save the weight gain sheet with a new name, select **F**ile | **S**ave **A**s, then choose the required directory and file name.

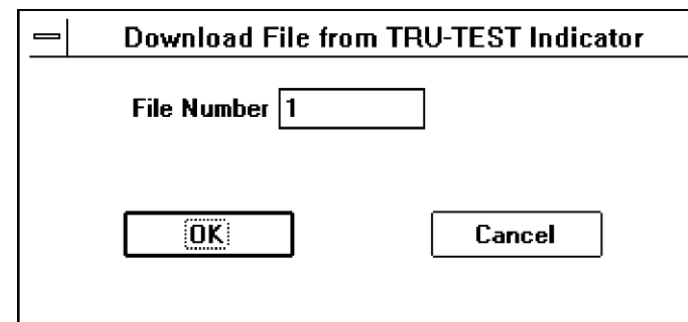
Download a Session from the Indicator

Use this process to load a file of weight data from the indicator into the currently open weight gain sheet.

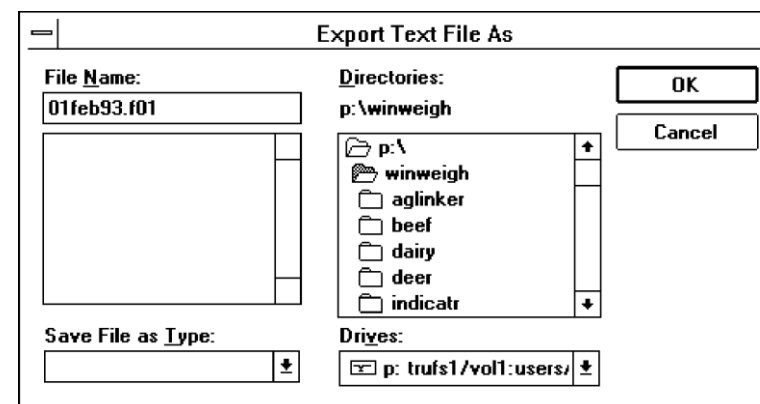
You need to know the file number of the required session on the indicator. Use the indicator's keypad to check the files and data in memory.

The indicator must be switched on and communications established (see page 8).

1. Select **I**ndicator | **D**ownload **F**ile.
2. Select the required file number.



3. Click on **OK** and the download of information from the indicator to the computer will proceed.
4. You can then optionally save the file as an ASCII file.



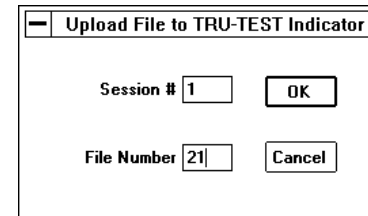
5. If you don't want to save an ASCII file, click on CANCEL.

Upload a Session to the Indicator

Use this process to transfer the data from a given session to a file in the indicator.

You need to know the number of an empty file in the indicator's memory.

1. Select **I**ndicator | **U**pload File.



2. Enter the number of the session you want to transfer. Session numbers are shown next to the # sign in the top right hand corner of each session.
3. Enter the file number where the data is to be saved in the indicator's memory.
4. Click on **OK**. The indicator beeps and begins transferring the data. The data items flash on the indicator's display as they are transferred.

The time to upload depends on the number of animals in the weighing session, about 4 seconds per animal is normal.

5. When the transfer is complete, WinWeigh returns to the weight gain sheet.

Import a Session from Computer Disk

Use this process to load the data from a weighing session that has been previously saved to computer disk.

1. Select **Sheet | **Import Session****.
2. Select the file required using normal Windows methods. The session file names represent the dates of the sessions.
3. WinWeigh loads the session data and inserts it at the appropriate date position on the weight gain sheet.

Note: data that can be imported to WinWeigh must have been saved in an ASCII file, see *Download a Session from the Indicator* on page 12 and *Export a Session to Computer disk* below.

Export a Session to Computer Disk

Use this process to save the data from an individual session to computer disk. You can then import this data into any weight gain sheet.

The data is stored on disk as an ASCII file.

1. Select **S**heet | **E**xport Session.
2. Select the directory for the type of animal.
3. WinWeigh displays a default file name based on the date of the session and the indicator file number. You can change the file name, but you must use the same date format so that, when re-importing, WinWeigh can sort the sessions into correct date order (see *Import a Session from Computer Disk* on page 14).
4. Click on **OK** to save the session to disk.

Notes

- You can save all the sessions of the weight gain sheet together in one file by saving the sheet, see page 12.
- A session can be automatically exported to disk while being downloaded from the indicator (see page 12).
- Since the data is stored in an ASCII file, you can easily load it into one of the common spreadsheet programs. The file is comma delimited and the sequence for each animal is:

TAG, WEIGHT, CONDITION CODE

Edit Data on the Weight Gain Sheet

You can manually edit the data in any of the live weight or condition code cells.

You can also add a blank animal record and then enter the data. See *Add an Animal* on page 16.

To delete an animal record, see page 17.

Manually Add a Session

To manually add a blank session, select **S**heet | **A**dd Session.

WinWeigh inserts a new session with today's date in the correct chronological position. Initially there is no animal data and the *Average*, *Total* and *Count* cells are all zero.

The new session has the same number of rows and same animal tags as the other sessions (if any) on the weight gain sheet.

Any existing session later than the new session is shifted to the right and its session number updated.

You can change the session date in the "Session Information" window (see page 24).

Delete a Session

This process deletes the current session on the weight gain sheet.

To delete a session, move the active cell to within the required session, then select **S**heet | **D**ele~~t~~e Session.

WinWeigh deletes the session and re-numbers the sessions to the right of it.

Add an Animal

You can manually add another animal to the weight gain sheet.

Select **Sheet | Add Animal**.

WinWeigh inserts a row for the animal and automatically allocates a tag number that does not conflict with the existing animals.

You can change the tag number by clicking in the left hand column to access the "Animal History" window (see page 25).

You can then manually enter the weights and condition codes for the new animal.

Delete an Animal

This deletes the animal from all sessions on the weight gain sheet.

To delete an animal, select **Sheet | Delete Animal**.

Edit Sheet Options

This allows you to control the operation of the weight gain sheet.

Select **Sheet | Options**.

Weight Gain Sheet Options			
Animal Type <input checked="" type="radio"/> Beef <input type="radio"/> Sheep <input type="radio"/> Deer <input type="radio"/> Pig <input type="radio"/> Dairy	Weight Units <input type="radio"/> Lb <input checked="" type="radio"/> Kg	Weight Gain <input checked="" type="radio"/> Weight Gain <input type="radio"/> Weight Gain % <input type="radio"/> Daily Gain <input type="radio"/> Daily Gain % <input type="radio"/> Monthly Gain <input type="radio"/> Monthly Gain %	<input type="button" value="OK"/> <input type="button" value="Cancel"/>
	Tag Translation <input checked="" type="radio"/> None <input type="radio"/> Alpha <input type="radio"/> Color <input type="radio"/> Both		
<input type="text" value="52"/> Dress Percentage	<input type="radio"/> Predicted weight in <input type="text" value="30"/> days <input checked="" type="radio"/> Predicted days until <input type="text" value="500"/> weight		

Weight Units

Select lb (pounds) or kg (kilograms). This does not change the numbers in the weight gain sheet, but changes the *Units* title.

Animal Type

The selected animal type is displayed on the weight gain sheet and printed on reports. In addition, WinWeigh uses the animal type to select the default directory for saving data.

Tag Translation

Indicators only handle numeric characters, hence tags are always represented as numbers. However, some farmers incorporate letters and colours in their tag codes. WinWeigh can interpret the numeric codes and substitute letters or colours. The letters and colour names then appear in the tag ID column and on printed reports.

You can select the translation to be applied to indicator tag numbers as follows:

None	Tags remain as numbers.
Alpha	Letter codes translated.
Color	Color codes translated.
Both	Both letter and color codes translated.

WinWeigh uses the following translation table.

Tag Translation Table

RED	1	A	1	J	10	S	19
ORANGE	2	B	2	K	11	T	20
YELLOW	3	C	3	L	12	U	21
GREEN	4	D	4	M	13	V	22
BLUE	5	E	5	N	14	W	23
PURPLE	6	F	6	O	15	X	24
WHITE	7	G	7	P	16	Y	25
GREY	8	H	8	Q	17	Z	26
BLACK	9	I	9	R	18		

Remember that, in the indicator, there are two 2-digit segments and one 4-digit segment for each tag (ID) number.

The 2-digit segments are used for colour and letter codes.

The 4-digit segment is for the numeric part of the tag.

The possible combinations are as follows:

- Number only
- Letter, number
- Letter, letter, number
- Colour, number
- Colour, letter, number

Tag Translation Examples

<u>Indicator tag</u>	<u>Translation Method</u>	<u>Result</u>
01021234	None	01021234
021234	Alpha	B1234
01021234	Alpha	AB1234
021234	Color	ora-1234
01021234	Both	red-B1234

(1234 is the number part of the tag).

Note: a simple method of editing tag colours, letters and numbers is provided on the "Animal History" screen (see page 25).

Weight Gain

This determines what appears in the weight gain columns of the weight gain sheet:

Weight Gain Weight gain of the animal since the last session.
TWG = W2 - W1

Weight Gain % Percentage weight gain of the animal since the last session.
TWG% = 100 × TWG ÷ W1

Daily Gain	Daily gain of the animal since the last session. $DWG = TWG \div D$
Daily Gain %	Percentage daily gain of the animal since the last session. $DWG\% = 100 \times \left(\frac{1 + TWG\%}{100} \right)^{\frac{1}{Days}} - 100$
Monthly Gain	Monthly weight gain of the animal since the last session. $MWG = DWG \times 30.$
Monthly Gain %	Percentage monthly weight gain of the animal since the last session. $MWG\% = 100 \times \left(\frac{1 + DWG\%}{100} \right)^{30} - 100$
W1	= Previous weight of the animal.
W2	= Weight of the animal at this session.
Days	= Number of days between the sessions.
TWG	= Total weight gain.
TWG%	= Total weight gain percentage.
DWG	= Daily weight gain.
DWG%	= Daily weight gain percentage.
MWG	= Monthly weight gain.
MWG%	= Monthly weight gain percentage.

The type of weight gain you select here is also reflected in the *Average* column at the right hand end of a weight gain sheet.

Dress Percentage

The percentage of final weight that gives the dressed weight of an animal. WinWeigh uses this percentage to display the dressed weight of each animal at the right hand end of the weight gain sheet.

Predicted Weight

Click to select this method of prediction if required, then enter the number of days. WinWeigh calculates the weight of an animal after the given number of days from the final session. The calculation is based on the daily weight gain between the last two sessions.

Predicted Date for Weight

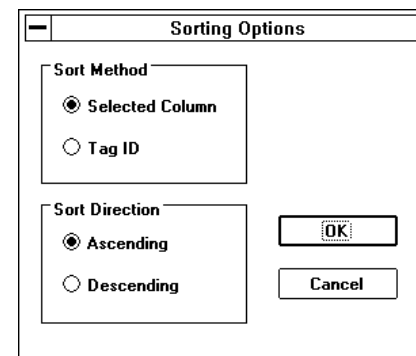
Click to select this method of prediction, then enter the required weight. WinWeigh calculates the number of days for the animal to reach the given weight. The calculation is based on the daily weight gain between the last two sessions.

Sort the Weight Gain Sheet

WinWeigh can sort the data on a weight gain sheet in many different ways.

To sort the data

1. Select **S**heet | **S**ort.



2. Click on the radio button for the required sort method.

The different methods are described below.

Selected Column

WinWeigh uses the values in the current column to sort the animals. ie. if the active cell is in the *Live Weight* column, animals are sorted in order of weight. If the active cell is in the *Condition Code* column, animals are sorted in numeric order of condition code.

Tag ID

WinWeigh sorts the animals into tag ID order.

Ascending

Animals are sorted in ascending order of the chosen measurement type (smallest at the top).

Descending

Animals are sorted in descending order of the chosen measurement type (smallest at the bottom).

3. To sort the weight gain sheet, click on **OK**.

Session Information Window

The "Session Information" window allows you to record various details of the session.

To access the window, click in the header for the session, or select **Sheet | Edit Session**.

The screenshot shows a dialog box titled "Session Information". On the left side, there is a section titled "Condition Code Units" containing a list of radio buttons: "Cond. Code", "Lame", "Empty", "Lamb%", "Treatment", "Muscle Score", "Micron", "Fat Depth", and "Other - Text:". To the right of this list are several input fields: "Date" with a date picker showing "June 01, 1994", "File Number" with a text box containing "21", and "Location" with a text box containing "No 1". Below these is a text area labeled "Other Condition Code Unit Text". In the top right corner, there are "OK" and "Cancel" buttons.

Condition Code Units

Click the appropriate radio button to select the required title for the condition code column in the weight gain sheet.

If you select *Other - Text*, you can enter your own title in the dialogue box.

Date

Click on ↑ or ↓ to scroll to the required date for the session.

File Number

This is the file number where the session was stored on the indicator.

Location

This allows you to record the location of the weighing session.

Animal History Database

The animal history database contains details of each animal.

The history report for an individual animal can be printed from the *File / Print* menu.

To access the "Animal History" window, click in left hand column or select **Sheet | Edit Animal**.

Animal History					
TagID	15	Remark		OK	
BirthWt (kg)	0.	WeanWt (kg)	0.	Breed	Cancel
BirthDate		Arrival Date		Sire ID	0
		Source		Edit Tag	Next >>
					Prev <<

You can select *Next>>* or *Prev<<* to display the history for the next or previous animal on the weight gain sheet respectively.

Field Notes

Several fields of information about the animal can be entered. Most are self explanatory, but notes on some of the fields are given below.

Tag ID

You can change the tag ID number for the animal.

A special function is provided to create the tag number from letter, colour and numeric codes, see *Edit Tag* below.

Note: if the weight gain sheet is currently sorted by tag ID, you need to select the sort option in order to re-sort after changing any tag ID numbers.

Remark

Enter any remark about the animal, you can type beyond the end of the displayed box and use ← or → keys to scroll the text.

Source

Where the animal originated.

Edit Tag

This accesses the routine for editing tag codes. You can select the required colour, letter, and number and WinWeigh then calculates the corresponding numeric tag code.

The screenshot shows a dialog box titled "Edit Tag ID". It contains three input fields: "Color" (with a dropdown arrow and a small square icon), "Alpha" (a small square), and "Number" (a text box). To the right of these fields are "OK" and "Cancel" buttons.

The tag translation table used by WinWeigh is given on page 19.

Printing

WinWeigh can print weight gain sheets and animal histories on many different types of printers.

Printer Setup

WinWeigh uses the standard Windows printer setup routine accessed from **File | Print Setup**.

For further information, refer to the Windows manual.

Print Preview

Before printing, you can preview reports on screen.

There are two options available from the **File | Print Preview** menu:

Preview weight gain sheet

This displays a preview of the weight gain sheet as it would appear on the printed page. You can zoom in to obtain a more detailed view by clicking the left mouse button while the mouse pointer is a magnifier symbol.

To exit the preview screen, click on the **Close** button.

Preview animal history

This displays a preview of the animal history as it would appear on the printed page for the current animal.

To edit the animal history details, see page 25.

Print Reports

Before printing you must ensure that the correct printer is set up, see *Printer Setup* above.

You can print an individual animal history or part of the weight gain sheet.

To print an individual animal history

1. Make sure your current position is on the appropriate spreadsheet row.
2. Select **File | Print | Print Animal History**.

To print the weight gain sheet

1. Make sure the required part of the weight gain sheet is displayed on screen.
2. Select **File | Print | Print Weight Gain Sheet**.

Only the columns displayed on screen are printed. To print other columns, scroll the screen and then print again.

Reference Section

The Tool Bar

The tool bar contains buttons for commonly used functions.
Click on the button to access the function.



Start a new weight gain sheet.



Open an existing weight gain sheet.



Save the weight gain sheet in its original file.



Print the weight gain sheet.



Access the help system.

The Menu System

In the descriptions below, the *current* item is the one where the active spreadsheet cell is positioned, ie. within a particular weight gain sheet, session or animal record.

File Menu

New

Create a new blank weight gain sheet. You select the type of animal.

Open

Load a weight gain sheet from disk. You select the directory and file.

Close

Quit the current weight gain sheet. Any other weight gain sheets displayed in other windows are unaffected.

Save

Save the current weight gain sheet in its original directory and file.

Save As

Save the current weight gain sheet in a new file. You select the directory and enter the new file name.

Print

Print the current weight gain sheet or animal history. You can select particular pages to print or access the printer setup routine.

Print Preview

Display a preview of the printed weight gain sheet or animal history on screen. You can zoom in to see more detail.

Print Setup

This is the standard windows printer setup routine.

Exit

Exit and close WinWeigh. If there is any unsaved data, you are given the option to save before the program quits.

View Menu

Toolbar

Switch the toolbar on or off. If switched off, you cannot use the toolbar buttons, but there is more screen space available for the weight gain sheet.

Status Bar

Switch the status bar on or off. If switched off, you cannot see the prompt messages, but there is more screen space available for the weight gain sheet.

Sheet Menu

Options

Access the "Weight Gain Sheet Options" window where you can change various settings that control the weight gain sheet.

Sort

Access the "Sorting Options" window where you can select the sort method.

Edit Animal

Access the "Animal History" window.

Add Animal

Add an animal (row) to the weight gain sheet.

Delete Animal

Delete the current animal through all the sessions on the weight gain sheet.

Edit Session

Access the "Session Information" window where you can view / edit details of the current weighing session.

Add Session

Add a blank session to the current weight gain sheet. The session is initially given today's date and inserted in the correct chronological position.

Delete Session

Delete the current session.

Import Session

Load a session that has been saved to disk as an ASCII file.

Export Session

Save the current session to disk as an ASCII file.

Indicator Menu

Reset Indicator

Establish communications with an indicator. The indicator must be connected to the computer and switched on. The Correct COM port must also be selected (see *Options* below).

Download

Transfer a file from the indicator to the current weight gain sheet. The session is inserted at the correct chronological position.

You enter the number of the file required from the indicator.

Upload

Transfer a session to a file in the indicator. You enter a session number (default is the current session) and indicator file number.

Options

Select the computer COM port that the indicator is connected to.

Window Menu

This is the standard Windows menu for arranging windows on screen.

Help Menu

Contents

Access the help system for WinWeigh.

About WinWeigh

Display information about WinWeigh including the version number.

Glossary of Terms

Alpha	Abbreviation for alphabetic. Letter characters rather than numbers.
ASCII	American Standard Code for Information Interchange. A common method of storing text files on computer systems.
Button	A graphic representation of a push button on screen that can be selected using the mouse.
Cell	A space for one item of data on a weight gain sheet, at the intersection of a row and a column.
COM port	The connection on a computer for a serial communications cable.
Communications	The electronic transfer of data between two systems.
Digit	A single character number between 0 and 9.
Directory	Part of a system for organising files on computer disk. A directory can contain files and sub-directories.
Download	The process of transferring data from the indicator to the PC.
Dress percentage	The percentage of live weight that gives the carcass weight of an animal.
Export	Save data to a special file type.
Field	In computer terminology, the location of a data item on screen.
File	A set of data stored on computer disk and given a name, or, the area in memory of an indicator where a weighing session is saved.

File extension	A three character suffix to a file name that denotes the file type.
Floppy disk	A removable disk for storing computer data.
Hard disk	An internal permanent disk for storing data in a computer.
Import	Load data from a special file type into the weight gain sheet.
Indicator	The control unit incorporating keypad and display for <i>TRU-TEST</i> weighing systems.
Integer	A whole number (not a fraction).
Numeric	Numbers only.
PC	Personal Computer.
Predicted days	The estimated number of days to reach a given weight.
Predicted weight	The estimated weight of an animal after a given number of days.
Radio button	A small circle on screen that changes colour when selected with the mouse to indicate which option is active.
Session	The area of a WinWeigh weight gain sheet representing one weighing session.
Spreadsheet	A program for manipulating data in rows and columns on screen.
Tag translation	The conversion of a number code to a letter, colour and number code.
Toolbar	A collection of buttons at the top of the screen that give quick access to certain functions.
Upload	The process of transferring data from the PC to the indicator.

Weight gain sheet	The working area of the screen in WinWeigh.
Window	The rectangular area on screen which contains the part of the program you are working on.

Index

A		P	
Animal		Predicted date	22
add	17	Predicted weight	22
delete	17	Print preview	27
history	24	Printer setup	27
type	18	Printing	27
C		Q	
Colour codes	19	Quit WinWeigh	8
Communications	8	R	
Computer - requirements	1	Reference section	29
Condition code		Running WinWeigh	5
column	6	S	
units	24	Session	
D		add	16
Date		delete	16
predicted	22	download from indicator	12
Dress percentage	21	export to disk file	15
E		file number	24
Edit data	16	import from disk file	14
Exit WinWeigh	8	information window	23
F		location	24
File menu - reference	29	upload to indicator	13
File number	24	Setup program	3
G		Sheet menu - reference	31
Glossary	34	Sort options	22
I		Spreadsheets	15
Indicator - models	2	Status bar	8
Indicator menu - reference	32	switch on / off	31
Installation	3	T	
M		Tag	
Menu	7	edit	25, 26
		translation	18
		Toolbar	8, 29

Index

switch on / off	31
U	
Units	18
condition code	24
V	
View menu - reference	31
W	
Weight	
column	6
predicted	22
units	18
Weight gain	
column	6
options	20
Weight gain sheet	6
create new	11
open existing	11
options	18
save	12
sort	22