



QUICKSTART GUIDE

SRS Stick Reader

1 Unpack the box

Check that you have all of the following items. If anything is missing, contact your supplier.



SRS stick reader (the stick reader)



USB flash drive/CD

Contains Data Link software and reference information



Power adaptor



USB-Serial adaptor



Power plug

Note: Power plugs for different countries are included in the box.



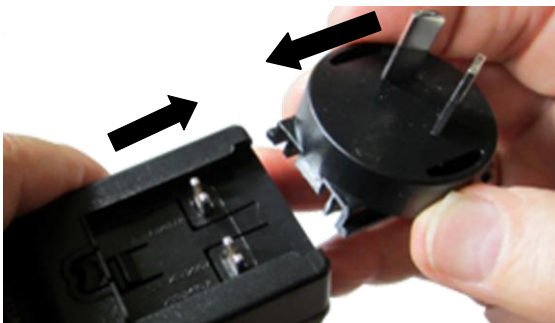
Power cable



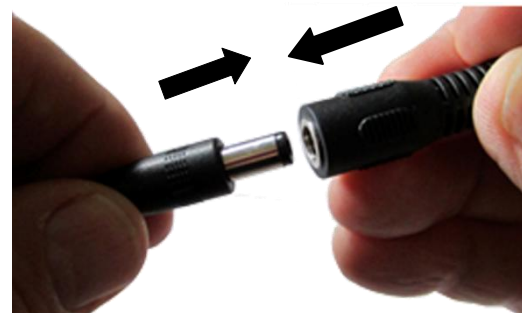
SRS-Serial cable

2 Assemble the power adaptor

Use the power adaptor and power cable to charge the stick reader's internal battery from the mains power supply, when needed.



- Find the correct power plug for your country.
- Slide the plug into the slots on the power adaptor. You will hear the plug click into place.



- Connect the other end of the power adaptor to the power cable.
This completes the power adaptor assembly.

3 Getting around

Parts of the stick reader



Turn the stick reader ON/OFF

Press the Read button to turn ON the stick reader. The stick reader beeps once.

Hold down the Off button to turn OFF the stick reader. The stick reader beeps 3 times then turns off.

Tip: When the stick reader is turned on the Red light flashes to indicate the battery level:

- 3 flashes = High
- 2 flashes = Medium
- 1 flash = Low
- No flash = Very low

Scan an EID tag

Press the Read button while holding the antenna near to an EID tag.

The Red light flashes while the stick reader searches for – or reads – an EID tag.

The Green light flashes and the stick reader beeps to confirm that the tag has been read and sent to the weigh scale indicator (the indicator).

Tip: If animals are moving quickly through a race or into a pen, hold down the Read button to scan continuously. Release the Read button to stop scanning. This tip assumes that the Read button is set to the default 'Standard' mode.

Bluetooth® connection status

Blue light flashing - The stick reader is searching for - or connecting to - a *Bluetooth* enabled device.

Blue light is illuminated all the time - The stick reader is connected to a *Bluetooth* enabled device.

Low battery indicators

The stick reader will beep once at:

- 5 minute intervals when the battery has about 40 minutes of power remaining.
- 2 minute intervals when the battery has about 20 minutes of power remaining.

4 Charge the battery

Caution! Use the stick reader only with the power adaptor and cables supplied (or genuine replacement parts).

Only charge the stick reader at temperatures between +5 and +40 °C (+41 and +104 °F).

The stick reader has an internal battery and when fully charged you can use the stick reader for up to 19 hours (with the default settings).

Before using the stick reader, you should fully charge the battery. This takes about 3 hours.

You can use the stick reader while it is charging.

Connect the power adaptor



a. Unscrew the dust cap.



- b. Line up the white arrow on the cable with the small arrow on the stick reader.
- c. Push the cable end into the stick reader then hand-tighten the metal collar.
- d. Plug the power adaptor into the mains power supply and switch ON.

If the stick reader is left ON while charging, the battery will be 'topped-up' intermittently to maintain battery charge level.

The lights on the stick reader indicate the charging status:

- The red and green lights flash while the stick reader is charging.
- The red light is illuminated continuously when the battery is fully charged.

5 Connect to an indicator automatically

To establish a *Bluetooth* wireless connection between the stick reader and an indicator, you need to pair them as follows:

Note: When connecting the stick reader and the indicator, always turn the indicator on BEFORE the stick reader.



- a. Turn the stick reader OFF then position it near to the indicator (ideally within 5 metres).
- b. Turn the indicator ON and, if necessary, check that its *Bluetooth* setting is enabled.
- c. Turn the stick reader ON. The blue light flashes while it searches for a *Bluetooth* enabled device (the indicator).

It takes approximately 1 minute to complete the pairing process.

When the pairing is complete, the stick reader's blue light illuminates to show that a connection is established with the indicator.

The stick reader will now automatically transfer the EID tag readings to the indicator.

Note: The stick reader automatically pairs to Tru-Test weigh scale indicators and to some third party indicators.

If automatic pairing fails, use the Data Link software to pair them manually.

6 Data Link computer software (optional)

In most circumstances, the stick reader can be used straight out of the box. If required, install the Data Link software on your PC to:

- Manually pair to a *Bluetooth* enabled device
- Change the settings of the sticker reader
- Update the stick reader's firmware

Using the Data Link software

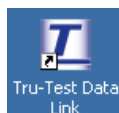
Note: Do NOT connect the panel reader to the PC until you have installed the Data Link software, supplied on USB flash drive/CD.

To install Data Link:

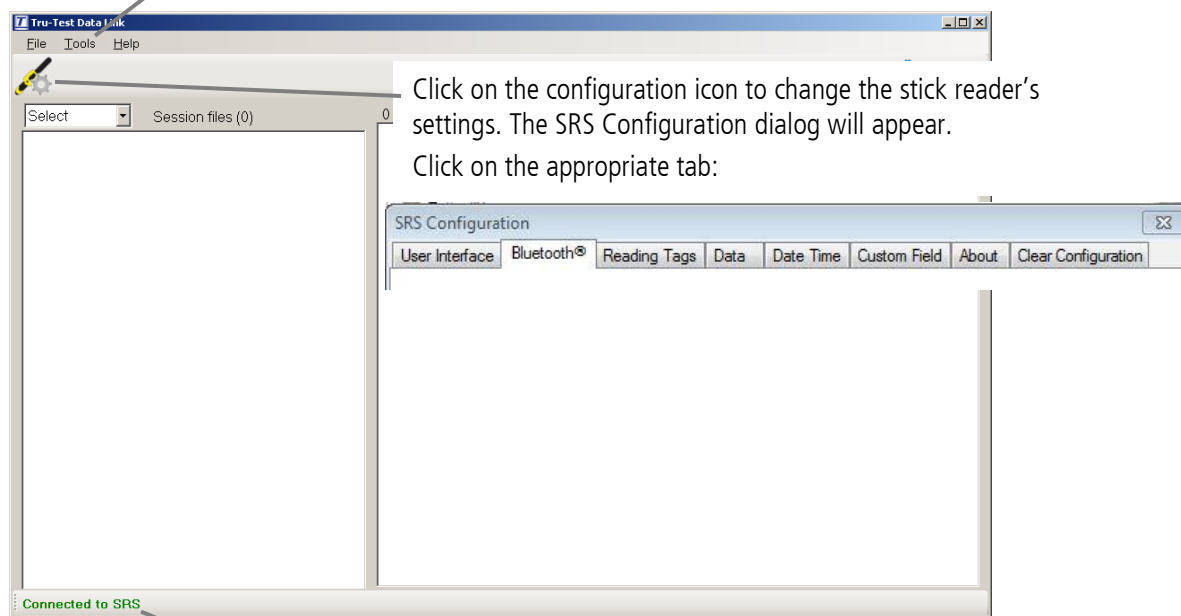
Insert the USB flash drive into a USB port or insert the CD into the CD drive on your PC and follow the instructions.

To use Data Link:

- Use the SRS-Serial cable and USB-Serial adaptor to connect the stick reader to a spare USB port on the PC.
- Turn on the stick reader.
- Launch Data Link by double-clicking on the icon on the desktop
- Wait for the stick reader to connect to the PC (this may take up to 1 minute).



To update the stick reader's firmware or the Data Link software, click **Tools/Updates**. There is an option to check for updates automatically each time Data Link is launched.



Click on the configuration icon to change the stick reader's settings. The SRS Configuration dialog will appear. Click on the appropriate tab:

Connection status - check that the stick reader is connected.

Data Link SRS stick reader configuration options

Default settings are shown in **bold**.

Tab name	Menu name	Options	Description
User interface	Automatic power down	Off 1 minute-1 hour	By default, the stick reader will turn off when the OFF button is pressed. However, you can set Automatic Power Down to between 1 minute and 1 hour so that the stick reader powers down automatically when it has been inactive for the period of time you set.
<i>Bluetooth</i> [®]	SRS MAC address	N/A	Displays the <i>Bluetooth</i> MAC address of the stick reader
	Add device to list of paired devices	Device name Device MAC address	Click to manually add a device to the list of paired devices. When paired, the device will appear in the paired list. You must enter: <ul style="list-style-type: none"> A name of your choice to identify the paired device. The MAC Address of the device (most <i>Bluetooth</i> enabled devices will show this unique address in their settings menu or have it printed on the device itself).
	Clear paired device list	N/A	Click to delete the list of paired devices.
	Set SRS <i>Bluetooth</i> [®] PIN	Set PIN to 0000 Set PIN to default	The PIN can be set to '0000' or 'default'. Click to change, if necessary (may be required to connect to some devices).
Reading tags	Read mode	Standard Continuous Single	Standard – Recommended for general use. The stick reader begins scanning when you press the Read button. Scanning continues for 3 seconds (default) or until a tag is read (whichever occurs first). If you hold down the Read button, the stick reader continues to scan and can read multiple tags. Continuous - Useful when you want to scan every animal in a pen or race. The stick reader begins scanning when you press the Read button and stops only when you press the Read button again. Single – When you press the Read button, the stick reader scans for and reads one tag ONLY. You must press it again to read another tag.
	EID output format	Standard No space Hexadecimal	The format that the stick reader uses for the EID tag readings. Standard – e.g. 826 000000012345 No space - e.g. 826000000123456 Hexadecimal - e.g. 8000F58000000001
	Read non-animal tags	Disabled Enabled	When enabled, the stick reader will read tags that are programmed as non-animal.
About	Firmware version	N/A	The specific version of firmware on the stick reader.
	Serial number	N/A	The serial number of the stick reader.
	Battery charge level	N/A	The status of the internal battery in the stick reader.
Clear configuration		N/A	Click Reset all configurations back to default factory values to reset the stick reader settings to default values shown in this table.

7 Troubleshooting

Problem	Possible cause	Solution
The stick reader will not connect to the indicator automatically.	Device is not in the stick reader's paired list	Manually connect the devices using Data Link.
The stick reader will not connect to the PC.	No connection between stick reader and PC.	Check the cable connections to the stick reader, USB-Serial adaptor, and PC. Close Data Link and restart it.
	Driver cannot find the find correct COM port.	Change COM port (in the Data Link Tools menu).
The <i>Bluetooth</i> ® wireless connection between the stick reader and the indicator keeps dropping out.	Poor signal strength or link quality	Bring the devices closer together, then turn the sticker reader OFF then ON again.
Stick reader turns OFF unexpectedly	Normal behaviour if the stick reader has been inactive and the Automatic power down setting is enabled.	Change the Automatic power down Setting to OFF with the Data Link software.
	The internal battery is flat.	Recharge the internal battery.
EIDs display in Excel as scientific numbers, e.g.826000000123456 as 8.26E+14	No blank space in the EID output format.	Change the EID output format setting to Standard with the Data Link software.
The stick reader continues to scan for a tag unless the Read button is pressed again	Read mode is set to Continuous.	Change the Read Mode to Standard (or Single) with the Data Link software.
The stick reader scans only 1 tag only but the Read button is being held down continuously	Read mode is set to Single	Change the Read mode to Standard (or Continuous) with the Data Link software.
Reduced read range or responsiveness.	Another EID reader (especially a panel reader) may be nearby. An electrical device (e.g. PC Monitor, variable speed drive as used in a dairy shed) may be causing interference.	Turn off the other EID reader or electrical device OR use the stick reader in a different area away from the device causing interference.
EID tag is not read.	There are 2 or more EID tags in the read zone.	During scanning, position the stick reader (or adjust the scanning setup area) so that only one tag at a time is in the read zone.
	EID tag is not ISO11784/ISO11785 compliant HDX or FDX. EID tag is faulty or not programmed by manufacturer.	Contact the supplier of the EID tags.

8 Further information

Caring for the stick reader

Wipe the stick reader clean using a damp cloth, warm water and soap. Other cleaners may damage the case.

Do not immerse the stick reader in water.

Do not leave the stick reader where it may be exposed to extreme temperatures (e.g. on the dashboard of a vehicle).

Store the stick reader in a cool, dry place.

Fit the dust cap when there are no cables connected to the stick reader. This will prevent moisture and dirt from entering the socket.

Service and warranty information

For service and warranty information, see www.tru-test.com.

Specifications

Size	650 x 65 x 51 mm (25½ x 2½ x 2") (L x H x W)
Weight	700 g (1 lb, 9 oz)
Communications	<i>Bluetooth</i> ® Class 1 wireless connection, up to 100 m (330') range. RS232 9600-115200 bps, Xon/Xoff
Operating temperature	-10 to +50 °C (+14 to +122 °F).
Storage temperature	-20 to +35 °C (-4 to +95 °F).
Battery charging temperature	+5 to +40 °C (+41 to +104 °F).
Read distance	HDX up to 330 mm (13"), FDX up to 350 mm (14").
Read rate	Up to 1000 reads per minute.
Tag compatibility	Reads ISO HDX and ISO FDX-B
Ingress protection	IP67 (immersion in 1 m (3') of water for 30 minutes).
Battery life	19 hours – Read Mode = Standard or Single 9.5 hours – Read Mode = Continuous
Battery	7.4 V, 1500 mAh Lithium Ion
Charging time	3 hours
Software	Tru-Test Data Link

Compliance

EC declaration of conformity

CE Tru-Test Limited hereby declares that this EID Reader is in compliance with the essential requirements and other relevant provisions of Directive 1999/5/EC. The declaration of conformity may be consulted at <http://livestock.tru-test.com/compliance>

© Tru-Test Limited, 2012-2015

All product names and brand names in this document are trademarks or registered trademarks of their respective holders.

No part of this publication may be photocopied, reproduced, stored in a retrieval system, or transmitted in any form or by any means, electronic, mechanical, photocopying, recording or otherwise without the prior written permission of Tru-Test Limited. Product specifications may change without prior notice. For more information on other quality Tru-Test Group brands and products, visit www.tru-test.com.

Tru-Test Limited	<i>Postal address:</i>
25 Carbine Road	P O Box 51078
Mt Wellington	Pakuranga
Auckland 1060	Manukau 2140
New Zealand	New Zealand



The *Bluetooth*® word mark and logos are registered trademarks owned by Bluetooth SIG, Inc. Any use by Tru-Test Limited is under licence. All trademarks with an * are not owned by Tru-Test Limited and belong to their respective owners.