

DATAMARS  
**Livestock™**



***Livestock Management Solutions***

***Weighing & EID Systems***

**Tru-Test.**  
DATAMARS

**Z**  
**TAGS.**  
DATAMARS



**Tru-Test™**  
DATAMARS

**Z**  
**TAGS™**  
DATAMARS

**T**  
**Temple Tag®**  
DATAMARS

# DATAMARS *Livestock*<sup>™</sup>

**We are a division of Datamars, a global company. Datamars Livestock provides the platform and tools for today's producers to better manage their livestock.**

We know that when our customers are able to collect and use data to make informed decisions, they achieve better and more consistent results. Simply, accurate livestock management translates to profitable operations.

Datamars Livestock is here for producers just like you. We are here to support you through the everyday requirements of livestock production. Our innovative and well-developed technology works alongside you, in the real nitty-gritty, day to day tasks.

Datamars Livestock links tools that promote animal health, enable precision animal management, and improve protein production.

These tools work together, communicating with each other and communicating with you.

When you're working the land, we're there with you. In the field and online, our digital platform connects you with information about your livestock, bolstering your intuition and enabling you to make precise, informed decisions.

Datamars Livestock - our products work with each other, but most importantly, they work with you.

***Patriot***<sup>™</sup>  
DATAMARS

***Speedrite***<sup>™</sup>  
DATAMARS

***njphillips***<sup>™</sup>  
DATAMARS

***livestock.datamars.com***

# *Table of*

# *Contents*



---

## **Contents**

### Livestock Weighing

Why weigh? .....	7
Selection guide .....	9
Indicators .....	10, 11, 12
Load bars .....	16, 17
Selection guide .....	17
Platforms .....	18, 19
Selection guide .....	19

Accessories .....	20, 21
-------------------	--------

### Electronic Identification Systems

Why EID? .....	23
Portable readers .....	25
Panel reader .....	26
Selection guide .....	27



---

*For more information about any of our brands or products, visit: [tru-test.com](http://tru-test.com), [ztags.com](http://ztags.com), or [livestock.datamars.com](http://livestock.datamars.com)*

Animal Identification	Datamars Livestock Training Academy .....	37
Why Z Tags? .....		29
EID ear tags .....	Other brands by Datamars Livestock .....	30
Matched pair sets .....		31
Data Management & Reporting		
Datamars Livestock Software .....		32, 33

# Livestock Weighing

***Tru-Test***<sup>™</sup>  
DATAMARS



## Why Weigh?

Weighing replaces guesswork with facts, making it a powerful performance measurement tool for producers.

Tru-Test scale indicators can assist critical decision making about feed, health treatments, and herd management.

On its own, weighing is a valuable addition to your operation. However, with the emergence of electronic identification, you can seamlessly collect and manage data to maximize individual animal performance.

By collecting data such as weaning weights, dam or sire information, animal health records or withdrawal periods, Tru-Test products can help you maximize profits and more accurately manage inputs.

**You can't manage what you can't measure.**

# Indicators

---

**Tru-Test indicators are the fastest, most versatile, accurate, and durable indicators in the world.**

Superdamp™ technology, unique to Tru-Test, locks in on weights extremely quickly, even with the liveliest animals.

In as little as 2 seconds\*, our indicators can lock in on a weight, and a bright stable light lets you know it is ready to be recorded.

An auto-zero function also ensures any accumulation of dirt or manure is zeroed after the animal leaves the scale.

Industry-leading features on the 5000 series gives you cutting edge data collection options chute side.





QUESTION	XR5000	ID5000	EziWeigh7i	S3
<b>Technical</b>				
Is my indicator visible in direct sunlight?	✓	✓	✓	✓
Is my indicator water and dust proof?	✓	✓	✓	✓
Can I view statistics on screen in the field?	✓	✓	✓	
Can I view animal history on screen in the field?	✓	✓		
Can I easily set up my scale by preloading favorite setups?	✓	✓		
Can I sort animals by weight gain or single criteria?	✓	✓	Weight only	
How many groups can I create for sorting livestock?	10	5	3	
Does my indicator have automatic Tru-Test load bar recognition and calibration?	✓	✓	✓	✓
<b>Data Collection &amp; Recording</b>				
How many individual records can I store on the indicator?	1 million	250,000	20,000	
How many weighing sessions can I keep on the indicator?	1,000	250	100	
How many custom traits can I record per animal?	100	3	1	
Can the indicator receive data from Electronic Identification (EID) readers via Bluetooth?	✓	✓	✓	
Can I link weights and other data to the animal's visual and electronic identification on the indicator?	✓	✓	✓	
<b>Data Transfer</b>				
Is the indicator compatible with the Data Link app?	✓	✓	✓	✓
Can I use a USB flash drive to get information off the weigh scale?	✓	✓		
Can I use <i>Bluetooth</i> ® to transfer data recorded on the indicator to the DataLink app after completing the session?	✓	✓	✓	
Can I use <i>Bluetooth</i> ® to send weights from the indicator to the DataLink app in real time?				✓
<b>Calculations</b>				
Will my indicator calculate weight gain?	✓	✓	✓	
Will my indicator calculate carcass weight?	✓	✓		
Will my indicator calculate dosage of animal health products based on animal weight?	✓			

\*Lock in times can vary based on weigh system set up, load bar quality, animal liveliness, etc.

## INDICATORS

### XR5000

**Suitable for operations with a commercial or seedstock focus, and those interested in a wide range of performance indicators.**

- Stores up to 1 million records in 1000 weighing sessions
- Calculates target weights based on age and breed to track growth
- Stores up to 100 pieces of custom information for each individual
- Up to 10-way sorting by custom criteria
- Calculates treatment dosage by weight to minimize waste
- Track treatments and set alarms for withholding periods
- Long life battery: 10 hours with backlight on and 13 hours with backlight off
- Compatible with Bluetooth® EID readers

JDE code: 823436

SAP code:880 0000-182



### ID5000

**Suitable for operations with a focus on weight gain and other important performance indicators.**

- Stores up to 250,000 records in 250 weighing sessions
- Graphs animal weight gain to track growth
- Stores up to three IDs and three data sets (breed, sex or other trait) for each animal
- Up to 5-way sorting by weight, weight gain and single criteria
- Long life battery: 10 hours with backlight on and 13 hours with backlight off
- Compatible with Bluetooth® EID readers

JDE code: 823435

SAP code: 880 0000-787



## INDICATORS

### EziWeigh7i

For producers interested in entry-level data collection.

- Stores up to 20,000 records in 100 weighing sessions
- Summarize statistics from previous and current weigh sessions for information at a glance
- Up to 3-way sorting by weight
- Record notes against each individual animal
- Long life battery; up to 15 hours of run time; charge time 3 hours; auto power down to save battery life
- Compatible with Bluetooth® EID readers



JDE code: 829008  
SAP code: 880 0000-474

### Example of an EID Weigh System



### See how it works

To find out more and see our weighing and EID products in action, visit [youtube.com/TruTestNorthAmerica](https://youtube.com/TruTestNorthAmerica)



## INDICATORS

NEW

## Simple, affordable weight collection as easy as 1,2,3

## S3

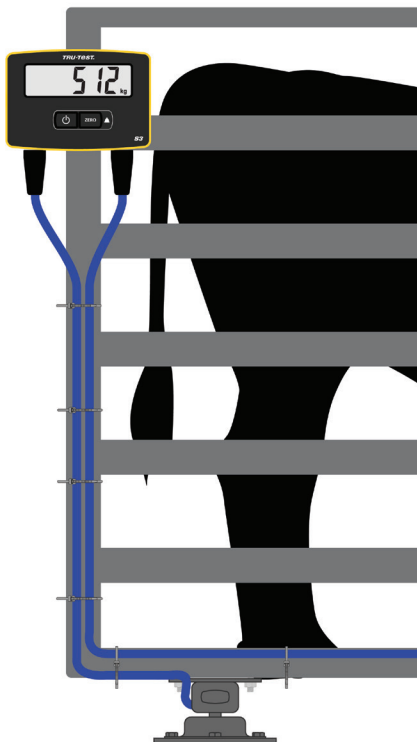
For producers interested in basic weight display and those recording weights directly in a herd management app.

- Simple to use
- Rugged and waterproof
- Bluetooth® Low Energy connectivity
- Record weights and configure settings with the Data Link app
- System comes with indicator and MP600 load bars



S3 Indicator  
JDE code: 834021  
SAP code: 880 0002-591

S3 Weigh System  
JDE code: 834024  
SAP code: 880 0002-593

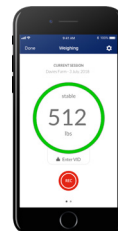


## Step 1: Weigh



Weigh your animals with the S3 indicator or scale system

## Step 2: Record



Send weights directly to your smartphone or PC in real time via Bluetooth® and record in the Data Link app

## Step 3: Analyze



Analyze recorded weights using Datamars Livestock cloud software

# Benefits of Weighing



## Maximize Profits

Increase profitability - *you can't manage what you can't measure.*



## Collect Key Data

Closely manage inputs - track performance and weight gain to better manage feed and resource costs.



## Monitor Performance

Collect data and closely monitor key weights such as birth weights, weaning weights, and yearling weights to maximize individual animal performance.



## Treatment Accuracy

Maximize treatment efficiencies – more accurately calculate dosage based on the requirements of the individual animal to help prevent under- or over-dosing livestock.



# ***The Story of Data: Improving efficiency and maximizing profit***

LeRoy Rooks currently manages Fenco Farms where they run between 1,800 to 2,000 Brangus and SimAngus commercial cows. Last year alone, Fenco Farms artificially inseminated over 900 head of commercial cows. They also have a registered Brangus operation and use data to help inform their management decisions.

"We use our XR5000 for everything. It's a very robust system. One of the main things we do with our animals is we set parameters for average daily gain in our feeders. The ADG function is very important on the XR5000. It shows us days vs weight to help us decide which animals qualify to go to a feedlot. Next year, we'll be using our XR5000 to look at the mature weight of females vs weaning weights of their offspring. We try to be data conscious in our commercial operation. We record quite a bit chute side. Data is our story."

At Datamars Livestock, we believe in making data accessible and easy to transfer. LeRoy agrees and says it's easy to get the data off the indicator. "I do the data transfer on my phone. For example, we pregnancy checked cows this morning. As soon as we got done, I sent the data to my analyst in Texas."

We also strive to make it easy to import data into herd management programs for further use. "Last week our analyst was here with us weighing registered calves. As soon as we got done weaning those calves, he uploaded the information to

[Datamars Livestock] cloud software for his data retrieval. He also sent the CSV files to his staff so they could put the data into CattleMax."

In addition to understanding the importance of data, Fenco Farms understands the necessity of efficiency and accuracy. Every animal on the operation has an EID tag, so all of the animal's data are recorded in the indicator with that electronic identification number.

Fenco Farms knows the importance of data, not just for their operation and use, but for the next stage of the market cycle as well. "One of the most beautiful things about the XR5000 is when we're sorting animals as feeders. We'll sort four or five semi loads on average daily gain, sex, body condition of the calf, etc., depending on where they are going. Tomorrow, when we load those semis, we have our XR5000 set up with some custom fields. We scan every single calf when it goes on that semi so by the time that semi lands in Kansas or Iowa, the feedyards have the EID numbers, starting weights, and average daily gain weights on everything that came off of that semi."

"We push the envelope." Fenco Farms has also taken data one step further with DNA sampling. "We DNA sample every calf. We use matched pair sets that correspond with the DNA samples, so everything is recorded as soon as we scan the tag and it all goes right into the XR5000."

Fenco Farms first began using Tru-Test products in 2014 with a portable EID reader. Shortly after, Fenco Farms bought their first XR5000. After using the products and seeing the data collection capabilities, Fenco Farms is a believer in Tru-Test. Now, they have two XR5000s, two stick readers, four panel readers, and three sets of load bars.

"As we grow, we're staying with Tru-Test. They have been very good to us. I had to send our XR5000 for service, and I got it back in two days. Customer Service has been excellent."

LeRoy also uses other products in the Datamars Livestock portfolio. "I'm a big supporter of Speedrite. We do rotational grazing on a 360-acre pivot and we put temporary fence on it. Occasionally we throw a Patriot solar charger in there when needed."

Datamars Livestock believes in the power of data and integrated animal management. Successful operations like Fenco Farms make us proud to continue offering our customers the high-quality tools they need.

# Load bars

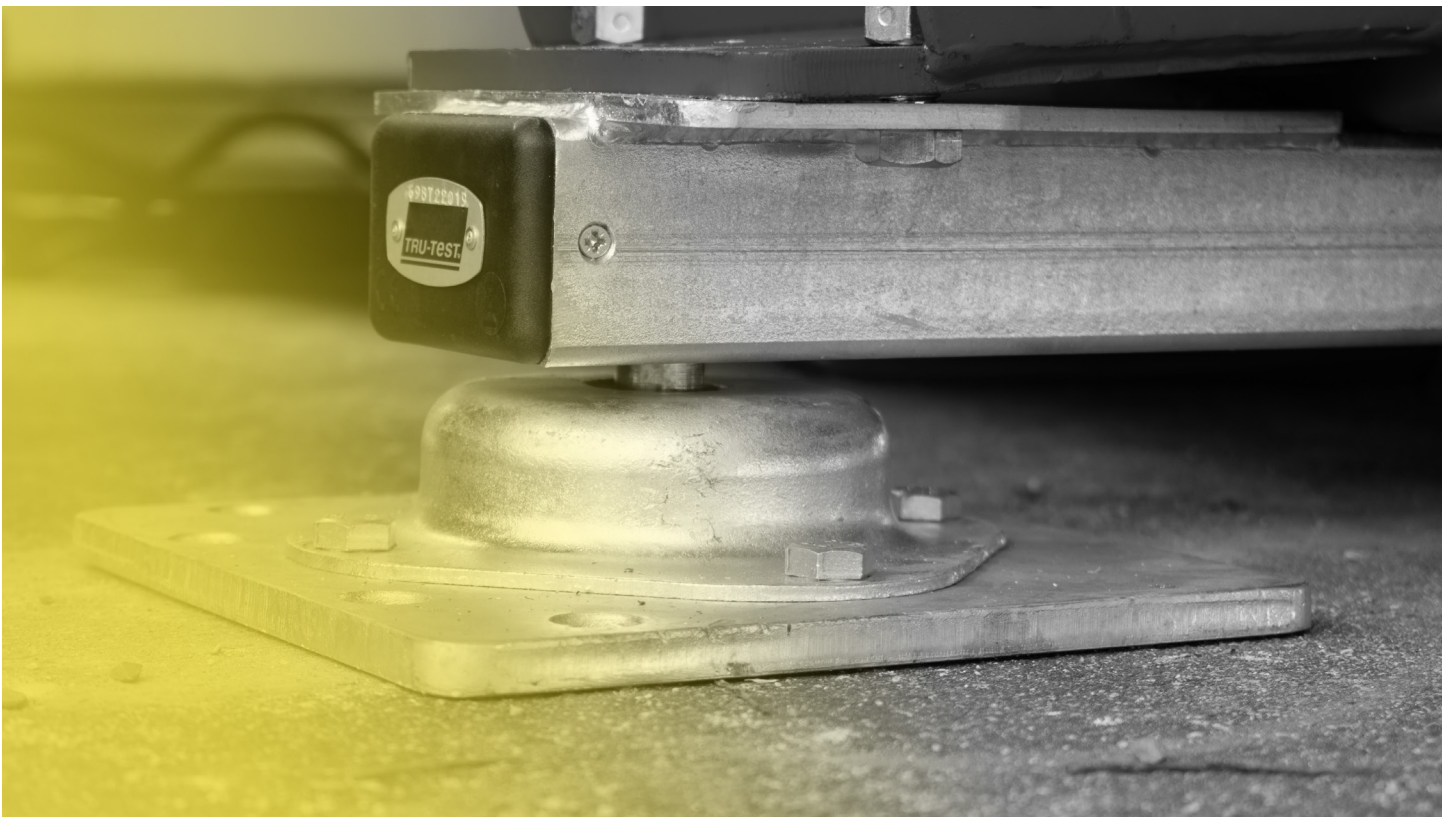
---

**With internal load cells made of aircraft-grade aluminum for ultimate resistance to corrosion, Tru-Test load bars are regarded as the most reliable, rugged, and long-lasting available.**

Heavy duty TPR/PVC cables also minimize the likelihood of cable damage. Our Multi-Purpose and Heavy Duty load bars can be relied upon to be accurate to within +/- 1%.

Tru-Test load cells are completely enclosed to protect against dirt, moisture, and rodents.

Tru-Test load bars are compatible with any Tru-Test scale indicator.





## MULTI-PURPOSE (MP)

Can be used with a temporary or permanent installation



### MP600/800

- Compatible with any Tru-Test scale indicator
- Corrosion resistant, with galvanized steel housing that protects the bar
- Rubber feet provide extra grip and shock protection
- Two sizes available:

MP600 - 23" long | 4,400 lbs capacity

MP800 - 32" long | 6,600 lbs capacity

MP600

JDE code: 805122

SAP code: 880 0000-202

MP800

JDE code: 805123

SAP code: 880 0000-240

## HEAVY DUTY (HD)

Tough, reliable, and easy to install under your chute.



### HD5T

- Compatible with any Tru-Test scale indicator
- Extremely easy to install. Simply bolt it to the chute and then bolt it to the concrete surface.
- More capacity. The 11,000 lb capacity heavy duty load bar is suitable to mount the heaviest of chutes.
- Solid load cell. Zero movement when installed under the chute. Static installation.
- Dimensions: 39" long | 11,000 lbs capacity

JDE code: 833749

SAP code: 880 0003-773

## SELECTION GUIDE

QUESTION	MP600	MP800	HD5T
I want to weigh show livestock in a crate or on a platform.	✓	✓	
I want to weigh sheep or goats in a crate or alleyway system.	✓	✓	
I want to weigh cattle in a stationary alleyway on a platform.	✓	✓	
I want to weigh cattle in a portable application using a platform.	✓	✓	
I want to weigh cattle in a manual chute.			✓
I want to weigh cattle in a hydraulic chute.			✓
I want to weigh horses in a breeding/equestrian program.		✓	

# Platforms

---

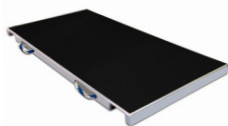
**Tru-Test platforms are constructed with durability, animal safety, and ease of transport in mind.**

Our lightweight platforms are designed to be durable enough for constant use and portable for seasonal weighing or weighing across multiple sites. These platforms are uniquely designed to fit Tru-Test's industry-leading load bars.



## PLATFORMS

### Small Animal



- Designed for pigs, goats, sheep, and calves
- Lightweight and portable
- Non-skid grit tape for traction
- Dimensions  
Small Animal: 24" wide x 48" long  
Use with MP600 load bars

JDE code: 831740  
SAP code: 880 0003-424

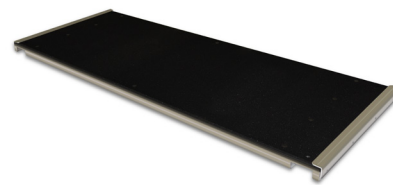
### WP600



- Designed for show cattle
- Lightweight and portable
- Steel and wood construction
- Low profile design
- No sharp edges
- Dimensions  
WP600: 24" wide x 72" long  
Use with MP600 load bars

JDE code: 834477  
SAP code: 880 0003-441

### AP600/800



- Uniquely designed for alleyway and portable applications
- Low profile design
- No sharp edges
- Rubber mat for traction and noise reduction
- Two sizes available  
AP600: 24" wide x 87.5" long  
Use with MP600 load bars  
AP800: 34" wide x 87.5" long  
Use with MP800 load bars

AP600  
JDE code: 821723  
SAP code: 880 0003-293

AP800  
JDE code: 821724  
SAP code: 880 0003-294

## SELECTION GUIDE

QUESTION	Small Animal	WP600	AP600/800
I want to weigh small/show livestock or calves.	✓		
I want to weigh show cattle, occasionally outdoors but usually in a barn or under a covering.		✓	✓
I want a lightweight, portable platform to move between cattle working sites.			✓
I want to weigh cattle in an alleyway system designed for a commercial, high volume operation.			✓

## ACCESSORIES

### Power Cables & Adaptors

#### 5000 Series Power Adaptor†

AC power adaptor for 5000 series scales. Includes multi-region plug adaptor.



JDE code: 826639 | SAP code: 880 0000-453

#### XRP2 Power Adaptor†

Use with the XRP2 EID panel reader. AC adaptor with Australian/NZ, European, UK, and US power leads.



JDE code: 825646 | SAP code: 880 0000-604

#### Power Adaptor & USB cable†

Use with EziWeigh7i indicator and WOW2™. Includes USB cable adaptor and multi-region AC adaptor.



JDE code: 818348 | SAP code: 880 0000-869

#### 5000 Series 12 V Charging Kit

Use with 5000 series scale indicators. Includes 12 V adaptor to connect to vehicle or battery.



JDE code: 827195 | SAP code: 880 0000-322

#### XRP2 12 V Power Cable†

Use with the XRP2 EID panel reader.



JDE code: 825644 | SAP code: 880 0000-510

#### XRS2/SRS2 Charging kit

Use with the XRS2/SRS2 & ERS EID readers. Includes 5 V multi-region adaptors and USB cable.



JDE code: 829488 | SAP code: 880 0001-007

### Mounting & Carry Cases

#### 5000 Series Plastic Carry Case†

Tough plastic carry case for 5000 series scale indicator.



JDE code: 824574P | SAP code: 880 0002-165

#### XRS2/SRS2 Carry Bag†

Polyester carry bag to store XRS2/SRS2 EID stick reader and accessories together. Includes foam padded inside pocket and shoulder strap.



JDE code: 830723P | SAP code: 880 0000-536

#### Fixed Mounting Bracket†

Used to mount Tru-Test scale indicators or XRP2 EID panel reader on a flat surface or horizontal pipe.



JDE code: WIH80001 | SAP code: 880 000-518

#### Adjustable Mounting Bracket

Use to mount Tru-Test scale indicators or XRP2 EID panel reader on a flat surface or horizontal pipe.



JDE code: 826641 | SAP code: 880 0000-754

## ACCESSORIES

### Mounting & Carry Cases (continued)

#### S3 Indicator Mounting Bracket†

Used to mount the S3 indicator on a flat surface or horizontal pipe. Included with indicator. Hardware not included.



JDE code: 833979P | SAP code: 880 0002-732

### Communication Cables & Adaptors

#### USB to Serial Adaptor Cable†

Connects your PC to WOW2, EID panel or EID reader.



JDE code: 824429P | SAP code: 880 0000-894

#### XRP2 Serial Cable†

Use to connect the XRP2 EID panel reader to scale indicators and other devices.



JDE code: 825643 | SAP code: 880 0000-828

#### Cable USB Series A to Mini-B†

Use to connect 5000 series indicators and XRS2/SRS2 EID readers to PC.



JDE code: 834892P | SAP code: 880 0002-615

#### XRP2 Antenna Extension Cable†

A 18' antenna extension cable for the XRP2 EID panel reader.



JDE code: 825649 | SAP code: 880 0000-306

#### USB Cable - USB A to Micro B

Use to charge S3 indicator.



JDE code: 833978P | SAP code: 880 0002-731

#### Cable C16 to D9 Serial

Use to connect 5000 series and EziWeigh7i scale indicators to a Tru-Test EID reader.



JDE code: 818324 | SAP code: 880 0000-371

#### Cable C16 to D9 Serial and '5 V DC' C16

Use with 5000 series. Provides two serial connection ports and enables simultaneous battery charging.



JDE code: 826638 | SAP code: 880 0000-665

† This accessory is included as standard with the applicable product and can be ordered as a replacement or as an additional spare.

# Electronic Identification Systems

***Tru-Test***<sup>™</sup>

**DATAMARS**



## Why EID?

---

Tracking your animals using electronic identification (EID) will give you ultimate control over the profitability of your livestock by increasing the accuracy and efficiency of data collection.

Tru-Test has worked hard with livestock producers to develop our range of EID readers to be the best available on the market.

# Portable and panel EID readers

---

**Electronic Identification (EID) means individual animals can be tracked through their entire life cycle via an electronic ear tag.**

Tagging animals with an electronic tag provides an opportunity to better manage the individual performance of those animals.

Over time, an animal's weight history can be tracked, good and bad performers can be identified, and resources can be better managed to ensure profits are maximized.

With a Tru-Test scale indicator and a portable or panel EID reader, animals can be scanned at the time of weighing.

Individual animal weights and other traits can be recorded against each animal's unique ID number. Information is stored within the scale indicator, ready for you to view in the field or back at the office.





## PORTABLE EID READERS

### XRS2 Stick Reader



#### Read, record, edit, and customize individual animal information.

- 1 million scanned tag memory
- Capture up to 15 pieces of customizable information for each animal
- Customizable alerts such as withdrawal period
- Reads all FDX and HDX tags
- Can accept uploaded EID/VID matched pairs
- Alpha numeric keypad for flexible data entry
- Bluetooth® wireless technology for operation while connected to a scale



JDE code: 829956 | SAP code: 880 0000-324

### SRS2 Stick Reader



#### Read and record EID tag information.

- 250,000 scanned tag memory
- View EID and visual tag information to confirm accurate scanning
- Reads all FDX and HDX tags
- Can accept uploaded EID/VID matched pairs
- Bluetooth® wireless technology for operation while connected to a scale



JDE code: 829958 | SAP code: 880 0000-152

## PANEL EID READER

### XRP2 Panel Reader



Tru-Test's superior read technology ensures quick and reliable tag reads every session.

- Reads all FDX and HDX tags
- Use as a stand alone tag recording device and animal counter or send tag numbers to a Tru-Test scale
- Requires a large or small antenna



JDE code: 824995 | SAP code: 880 0000-475

### Large Antenna

**Rugged design and easy to install large antenna**

- For cattle and deer
- Read range up to 3 feet
- Antenna size:  
24 inches x 34 inches



JDE code: 824996 | SAP code: 880 0000-779

### Small Antenna

**Rugged design and easy to install small antenna**

- For sheep, goats, and swine
- Read range up to 3 feet
- Antenna size:  
16 inches x 17 inches



JDE code: 824997 | SAP code: 880 0000-259

## SELECTION GUIDE

QUESTION	SRS2	XRS2	XRP2
I want a portable EID reader that can travel to multiple locations with minimal set up.	✓	✓	
I want to upload EID/VID matched pairs from my computer.	✓	✓	
I want to record EID tags for branded beef programs.	✓	✓	
I want to scan EID tags and collect customized data in the field.		✓	
I want a stationary EID reader to automate tag reading for my chute or working pens.			✓
I want to send EID numbers to a Tru-Test scale in real time.	✓	✓	✓

**“ All of our cows have an EID tag. Every time a cow comes through the chute, her EID tag is read, and that goes into our computer system. From there, I can look up that cow’s whole history. ”**

**LAURENT LOLLIS**

OPERATIONS MANAGER

BUCK ISLAND RANCH

LAKE PLACID, FL

**Tru-Test™**  
DATAMARS

# ANIMAL IDENTIFICATION





## ***Why Z Tags?***

---

Providing producers with identification tools for over 25 years, Z Tags products include visual tags, electronic identification (EID) tags, and innovative applicators that make tagging livestock easy, safe, and efficient.

The Z Tags range offers high-quality livestock identification tags and applicator devices, designed to meet your operation's needs.

We recommend using Z Tags and Tru-Test products together, giving you a complete identification and animal management solution.

# Electronic ear tags

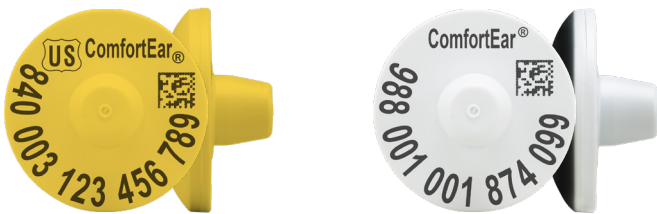
**These premium EID tags are easy to apply and have outstanding durability and retention.**

**Superior Readability.** Industry-leading read distance, depending on reader quality and environmental factors.

**Convex Tamper Evident Design.** Convex tag base designed for animal comfort and healing. Tamper-evident design ensures security in livestock management programs.

**Easy Application.** Our Z2 No-Tear-Tagger™ and Universal Taggers ensure fast, easy, and foolproof application while eliminating torn ears.

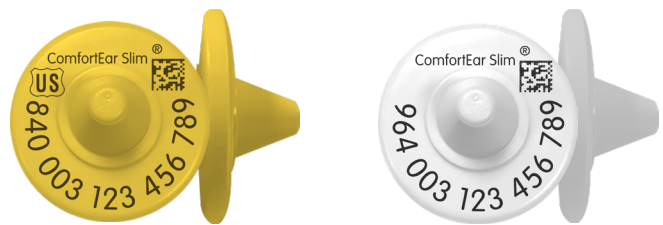
## ComfortEar®



### *Suitable for all livestock*

- Available in FDX and HDX
- Apply with the Universal Two Piece Tagger
- Available with 988 or with 840 USDA approved numbers
- Laser printed to last
- Dimensions:
  - Diameter: 1 1/4"
  - Weight: 6.8 g
  - Frequency: 134.2 kHz

## ComfortEar® Slim



### *Suitable for all livestock*

- Available in FDX and HDX
- Apply with Z2 No-Tear-Tagger or any Universal Two Piece Tagger
- Available with 964 or with 840 USDA approved numbers
- Laser printed to last
- Dimensions:
  - Diameter: 1 1/8"
  - Weight: 4.2 g
  - Frequency: 134.2 kHz

# Matched pair sets

**Matched pair sets gives the unique opportunity to combine the efficiency of EID tags with the readability of visual tags.**

## Stockman

*Compatible with ComfortEar Slim.*

- Two piece visual tag
- Flexible material to prevent ripped ears
- Outstanding readability and durability
- Sizes: Cow, Calf, Small Animal



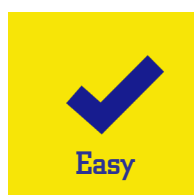
## Z1 No-Snag-Tag®

*Compatible with ComfortEar or ComfortEar Slim.*

- One piece visual tag
- Designed for fast tagging and healing
- Foolproof design for superior retention
- Sizes: Cow, Calf, Long-Neck Calf, Small Animal, Hog



## Benefits of Matched Pairs



For more information about Z Tags products, visit [ztags.com](http://ztags.com).

***Data***

***Management***

***& Reporting***

DATAMARS  
***Livestock***<sup>™</sup>





***Powerful online  
weight management  
software.***

---

The Datamars Livestock cloud software gives you access to weight data which can be viewed and shared from any device. Visual dashboards present complex information simply so you can quickly make decisions backed by data.

## DATAMARS LIVESTOCK SOFTWARE

### Datamars Livestock Cloud Software

Suitable for all types of livestock, Datamars Livestock is an online software which turns your data into clear, useful information. Monitor your animal's weight gains, track their performance to target weights, and identify top and bottom performers by simple graphs and charts. Best of all, this software is free to you with your purchase of Datamars Livestock products!

- Keep track of all your animal data in one place and easily view each individual animal's details and history
- Seamlessly transfer data directly from your Tru-Test scale, or via the Data Link smartphone and PC apps
- Instantly share weight data with others
- Easily sort, filter, and view animal data by single or multiple criteria
- Download reports and graphs in common file formats
- Back-up your sessions in the cloud
- Log in from any device with an internet connection
- Receive notifications to keep your Tru-Test device software up-to-date
- Built-in support features to help if you need it

### See how it works

To find out more and see Datamars Livestock in action, visit [youtube.com/TruTestNorthAmerica](https://youtube.com/TruTestNorthAmerica)



## DATAMARS LIVESTOCK SOFTWARE

### Data Link App for Smartphone



Datamars Livestock Data Link is a free application for Apple iOS and Android that enables you to easily download data stored on your Tru-Test Wi-Fi and Bluetooth® enabled EID readers or scale indicators.

- Send session data to Datamars Livestock to track your groups to target weights and share up-to-date reports
- Select a session file to email back to the office or send to another recipient
- Open a session and review individual animal records
- If you're not in 3G or Wi-Fi coverage, your session will automatically upload the next time you get coverage



### DATA LINK FOR SMARTPHONE COMPATIBILITY GUIDE

Product	iOS	Android
XR5000, ID5000	✓	✓
EziWeigh7i	✓	✓
S3	✓	✓
XRS2, SRS2	✓	✓
XRP2		✓
Tru-Test Bluetooth® Adapter		✓

### Data Link App for Windows PC

- Connect to your Tru-Test EID reader and scale using your Windows PC
- Enables recorded information to be easily downloaded to your PC and new information to be uploaded to your scales or EID reader
- Use PC Data Link for device software updates
- Send session data to Datamars Livestock

### Screen Link App

- Share real-time weighing information with your Android smart devices, so you can see animal weights when you're out of sight of the scale





***Learn about Datamars  
Livestock solutions  
and products in an  
easy, accessible way!***



**DATAMARS  
Livestock™**

**Join our FREE Datamars  
Livestock Training Academy**

Courses are short and available 24/7. Work at your own pace and share your certificate on LinkedIn when you're done!

Register online at [academy.livestock.datamars.com](https://academy.livestock.datamars.com)

***Works better***

***together.***

**Tru-Test™**  
DATAMARS

Tru-Test's range of weighing products and EID readers help producers improve productivity and profitability.



[tru-test.com](http://tru-test.com)

**Z  
TAGS™**  
DATAMARS

Providing producers with their identification needs for over 25 years, Z Tags products include long-term visual tags, electronic tags, and innovative applicators that make tagging livestock easy, safe, and efficient.



[ztags.com](http://ztags.com)

**Temple Tag®**  
DATAMARS

Temple Tag has been the number one choice of professional cattle feeders since 1957. These products are uniquely designed to provide durable, efficient identification solutions for short-term use in a feedyard or stocker operation setting.



[templetag.com](http://templetag.com)

**We're committed to delivering a broader, integrated animal management portfolio, so we've united our product brands under one family – Datamars Livestock.**

Our goal is to give producers the tools they need to help feed the growing global need for high quality protein.

Our journey starts with young animals being tagged at birth. As your animals grow, our identification tools can help you track inputs more precisely. Our syringes will help you dose more accurately and efficiently, saving you time and stress. Our line of livestock scales and EID readers takes this one step further, allowing you to collect and manage data throughout the animal's lifecycle.

Managing inputs isn't just about the livestock either – our electric fencing and automatic waterers give you more control over the natural resources you use every day.

Datamars Livestock takes pride in quality products and exceptional service. We believe in the future of agriculture, and we're here to help you face whatever challenge comes your way.

**Speedrite.**  
DATAMARS

From incredibly powerful energizers to a range of durable accessories, Speedrite premium electric fencing products offer a seriously unbeatable combination of power, innovation, and reliability.



[speedrite.com](http://speedrite.com)

**Patriot.**  
DATAMARS

Patriot's range of electric fencing energizers and accessories match your needs for simplicity, reliability, and performance - all at an outstanding value.



[patriotglobal.com](http://patriotglobal.com)

**njphillips.**  
DATAMARS

NJ Phillips animal health delivery systems are proven to perform under many different conditions. These products are known for accuracy, quality, and ease of use.



[njphillips.com](http://njphillips.com)

# DATAMARS *Livestock*

**800.433.3112**  
***livestock.datamars.com***

 DatamarsLivestockNA

 datamarslivestock\_northamerica

 DatamarsNA

**Tru-Test.**  
DATAMARS

**Z**  
**TAGS.**  
DATAMARS

**T**  
**Temple Tag**  
DATAMARS

**Patriot.**  
DATAMARS

**Speedrite.**  
DATAMARS

**njphillips.**  
DATAMARS